

# Environmental Enhancement Preservation Communities Overlay (EEPCO) Study

Steering Committee Meeting No. 1

December 18, 2017



# About the Study

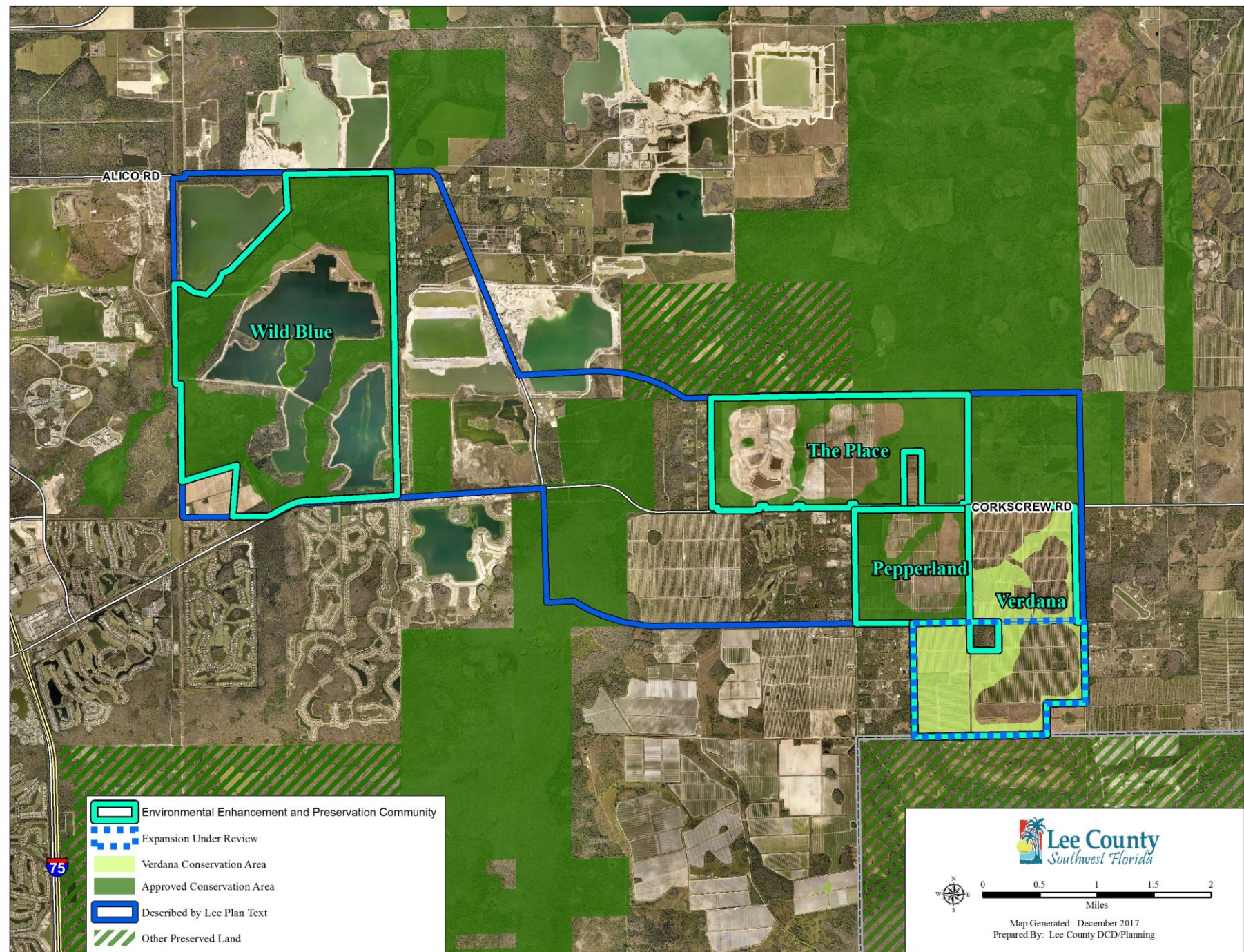
- ▶ To identify on a cumulative basis the needed transportation improvements to accommodate increased densities within the Environmental Enhancement & Preservation Communities Overlay (EECPO), and opportunities for regional environmental enhancements in conjunction with the transportation improvements
- ▶ More specifically, to identify the costs and timing of needed improvements, and the proportionate fair-share obligations toward the costs of the improvements from the developments within the Overlay

# Public Involvement Program

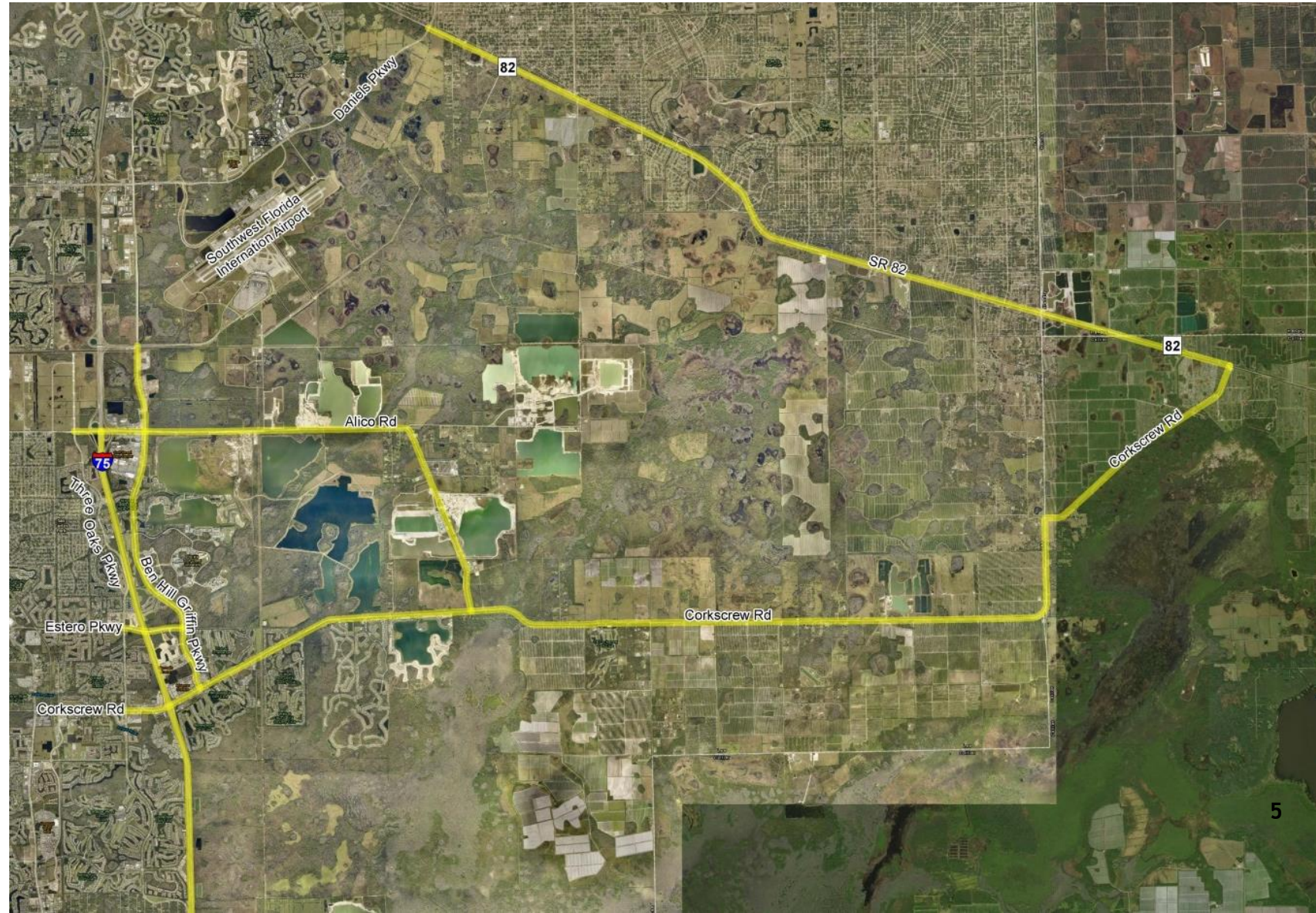
- ▶ Steering Committee established
- ▶ Developing/maintaining an interested parties list
- ▶ E-Newsletters
- ▶ Having small group technical coordination meetings with agency representatives and consultants to confirm the best available data for certain technical topics
- ▶ Public meeting at end to present study results



# EEPCO Boundaries



# Traffic Study Area



# Traffic Analysis

- ▶ Existing Traffic Data Collection - Daily Traffic Volumes
- ▶ Existing Roadway Segment Level of Service Analysis
- ▶ Estimation of Future Year (2026) Traffic Volumes
- ▶ Future Year Roadway Segment Level of Service Analysis/Identification of Additional Capacity Needs
- ▶ Transportation Improvement Cost Estimates (including Surface Water/Wildlife Crossings)

# Completed Tasks

- ▶ Task 1 - Compile Existing Traffic Data (**Completed May**)
  - ▶ *Traffic counts/adjustment factors/area development approvals/road capacities/programmed improvements*
- ▶ Task 2 - Level of Service Analysis for Existing Conditions (**Completed May**)
  - ▶ *Comparison of traffic counts to roadway capacity*
- ▶ Task 3 - Base Year Model Subarea Modifications (**Completed Aug.**)
  - ▶ *Calibration of FDOT computerized transportation model to reflect existing development and programmed improvements*
- ▶ Task 4 - Future Year Traffic Projections (**Completed Sept.**)
  - ▶ *Use of FDOT model to estimate traffic volumes in development build-out year of 2026*
- ▶ Task 5 - Level of Service Analysis for Future Conditions (**Completed Sept.**)
  - ▶ *Compare future traffic volumes to capacities with and without EEPSCO developments (Wild Blue, The Place/Corkscrew Farms, Pepperland Ranch, Verdana)*

# Environmental Analysis

- ▶ **Environmental Data Collection (Complete)**
  - ▶ Wildlife agencies and other environmental stakeholders asked to contribute
  - ▶ Data collected includes land cover, wetlands, historic flowways, structures/culverts, major developments, protected species, wildlife crossings, conservation/preserve lands
- ▶ **Permit Inventory (Complete)**
  - ▶ Includes permitted and permit-pending major developments along with County-approved future developments



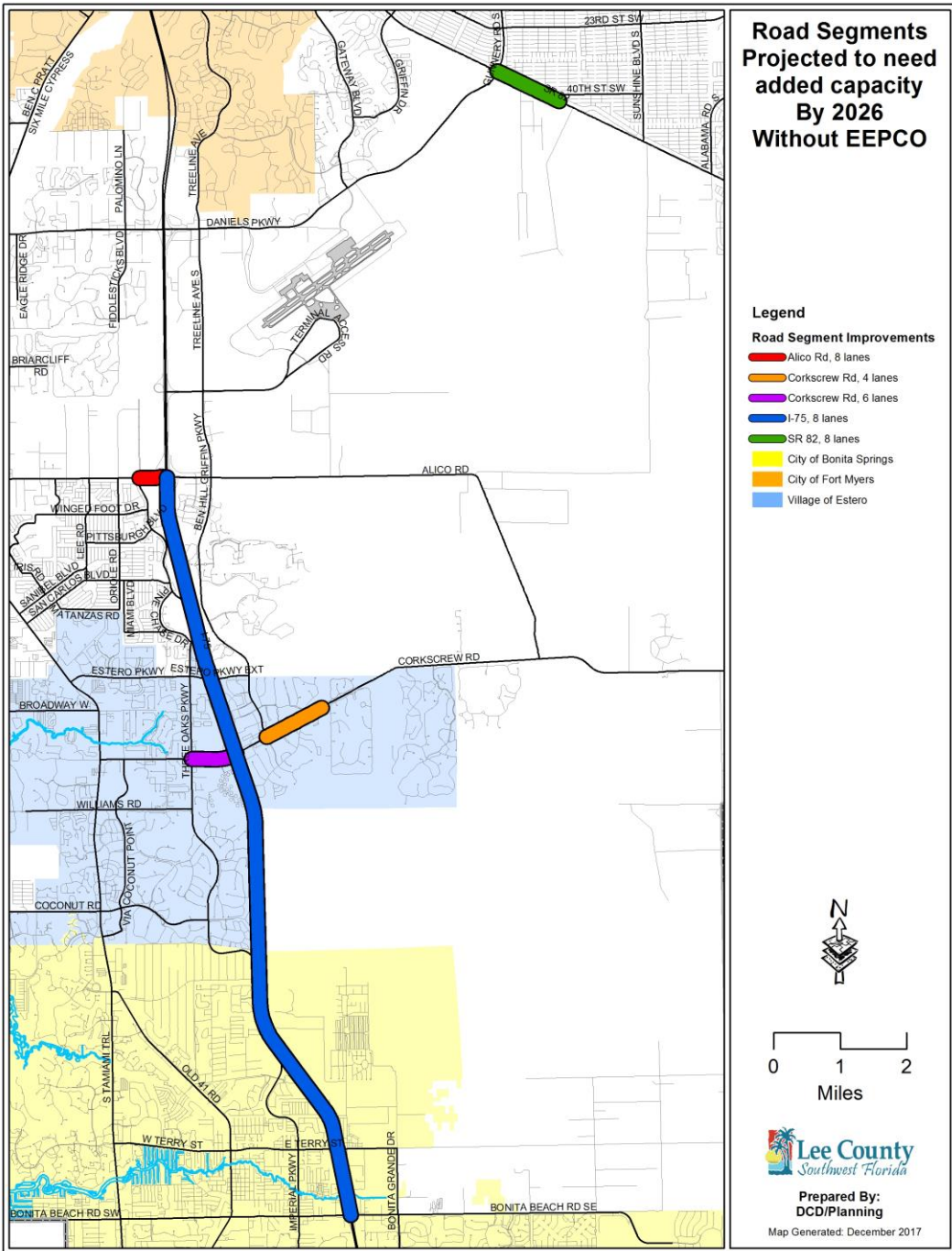


# Environmental Analysis

- ▶ Environmental Impacts of Roadway Network Improvements
- ▶ Mitigation Cost Estimate
- ▶ Opportunities for Regional Environmental Enhancement
  - ▶ Field review is complete
  - ▶ Next step is meeting with environmental representatives
- ▶ Cost Estimates for Enhancements



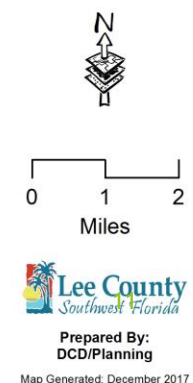
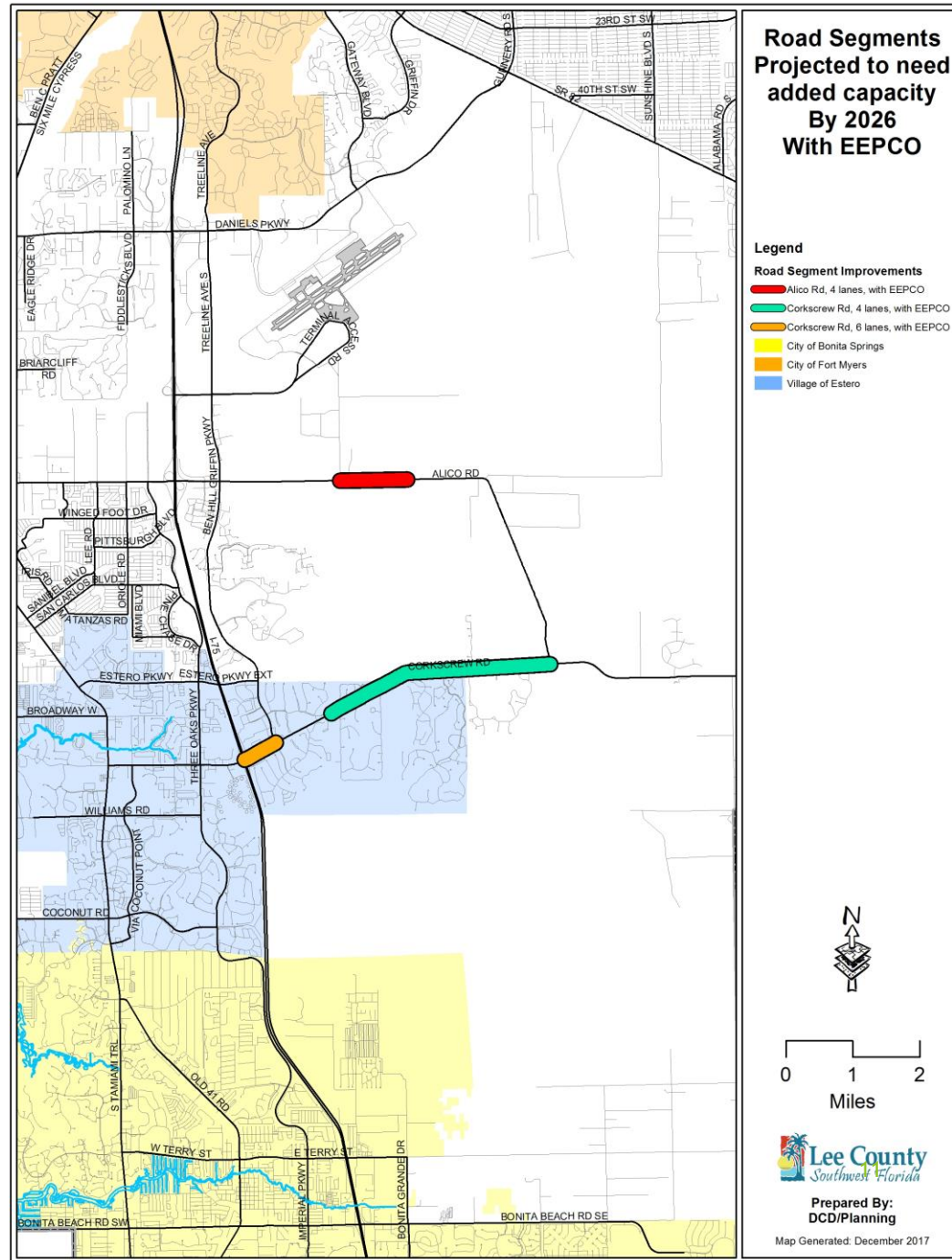
# Road Improvements Needs Summary Without EEPCO Developments



- ❑ I-75 8-laning from Bonita Beach Road to Alico Road (FDOT is programming a PD&E study)
- ❑ Corkscrew Road 6-laning from Three Oaks Parkway to I-75; 4-laning from Ben Hill Griffin Parkway to Grande Oak Way (Grandezza entrance)
- ❑ Alico Road 8-laning from Three Oaks Parkway to I-75
- ❑ SR 82 8-laning from Daniels Parkway to SW 40th Street

# Road Improvements Needed with added EEPKO traffic (basis for prop share)

- ❑ Alico Road 4-laning from Airport Haul Road to WildBlue Entrance
- ❑ Corkscrew Road 6-laning from I-75 to Ben Hill Griffin Parkway
- ❑ Corkscrew Road 4-laning from Grande Oak Way to Alico Road



# Remaining Tasks

- ▶ Task 6 - Transportation Improvement Cost Estimates (In Progress)
  - ▶ *Planning-level costs for adding capacity to roads projected to fail and accommodating surface water flow and wildlife movements*
- ▶ Task 7 - Environmental Support Tasks (In Progress)
  - ▶ *Surface water flow and wildlife movement data collection and coordination to identify opportunities for enhancements*
- ▶ Task 8 - Proportionate Share Analysis/Identification of Potential Financing Options (Pending)
  - ▶ *Calculate share for each EEPKO development of costs of improvements needed with their impacts*
- ▶ Task 9 - Public Involvement Program (In Progress)

# Study Conclusion

- ▶ Technical Memorandums
  - ▶ Traffic
  - ▶ Surface water flow
  - ▶ Wildlife movement analysis
  - ▶ Financing options
- ▶ Presentation of recommendations to BOCC
- ▶ Final Public Meeting

# CIP Programming

- ▶ BOCC to incorporate identified road improvements into transportation CIP priority list
- ▶ Corkscrew Road and Alico Road widening
  - ▶ Will consider CIP priority order, costs and available revenues
  - ▶ Advancing projects depends on timing of available revenues
  - ▶ Available revenues would include developer contributions (which will come in as they develop), County revenues, and possible funding from the Village of Estero
  - ▶ Split into multiple projects, each taking 5-10 years from start to finish
  - ▶ Could consider interim improvements - asking consultant to evaluate

# Interim Intersection Improvements Completed and In-Progress

## Completed:

- ▶ Corkscrew Road at Bella Terra Boulevard > traffic signal operational (11/30/2017)
  - ▶ funded by The Place developer for credit against prop share

## In Progress:

- ▶ Corkscrew Road at I-75 > FDOT 2019 construction project to improve ramps and turn lanes in the interchange
- ▶ Corkscrew Road at Fire House Lane > extension of westbound left-turn lane or creation of more on-site vehicle queueing for student drop-off/pick-up at Pinewoods Elementary School

# Interim Intersection Improvements Under Evaluation

- ▶ Corkscrew Road at Three Oaks Parkway > Village of Estero Traffic Study consultant recommends extension of eastbound dual left turn-lanes and addition of a second northbound right-turn lane
- ▶ Corkscrew Road at Corkscrew Woodlands > Modify median opening when developers extend frontage road and fund traffic signal at Puente Way
- ▶ Corkscrew Road at Ben Hill Griffin Parkway > Village of Estero Traffic Study consultant recommends extension of southbound dual left-turn lanes
- ▶ Corkscrew Road at Cypress Shadows Boulevard > Village of Estero Traffic Study consultant recommends installation of westbound left-turn lane



# Discussion / Questions